



Product Service

CERTIFICATE

No. Z1A 17 10 71923 039

Holder of Certificate: **Völkle Bürostühle GmbH**

Hohenholz 1
72290 Loßburg
GERMANY

Certification Mark:



Product: **Swivel Chairs**

Tested according to:

DIN EN 1335-1:2002
DIN EN 1335-2:2010
DIN EN 1335-3:2009
AfPS GS 2014:01 PAK

The product meets the safety and health requirements of the German Product Safety Act section 20 to 22 ProdSG. The certification marks shown above can be affixed on the product. It is not permitted to alter the certification marks in any way. In addition the certificate holder must not transfer the certificate to third parties. This certificate is valid until the listed date, unless it is cancelled earlier. See also notes overleaf.

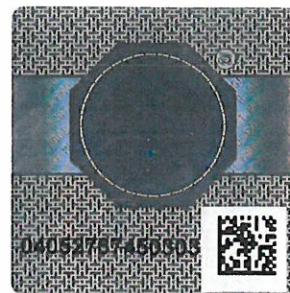
Test report no.: 713111051-2

Valid until: 2022-10-19

Date, 2017-10-24

(Jens Biesenack)

Page 1 of 6





Product Service

CERTIFICATE

No. Z1A 17 10 71923 039

Model(s):

Family: ECO
Types:
1050 / 1060 S2
1050 / 1060 S5
1050 / 1060 S6
1050 / 1060 EB

Parameters:

General description:
seat height adjustment by gas spring
synchronous inclination of seat surface plus
separate seat tilt adjustment
seat depth adjustment
adjustable height of the backrest
armrests are fixed on the seat support
and in height and clear with adjustable

Seat support:
Type S2 + S5: synchro mechanism with seat depth adjustment
Type S6: synchro mechanism with seat tilt-
and depth adjustment
Type EB „Ergo Balance“: synchro mechanism with seat tilt-
and depth adjustment and Ergo Balance
plastic seats with seat pad XT/1050-60

Height adjustment:
by gas spring, Type Stabomat C
DIN 4550, Class 2, manufacturer Stabilus

Backrest:
front part uoholstered
plastic seat Type 1050 / 1060

Armrests:
plastic armrests, in height and clear width adjustable
Type 1 und Type 2

Base:
Aluminium pressure die-casting and plastic

Castors:
load dependent limited double rollers Ø 50 mm

Further technical data please see Attachment 1.

Factory(ies): 71923

Page 2 of 6