



Product Service

CERTIFICATE

No. Z2 17 10 71923 040

Holder of Certificate: Völkle Bürostühle GmbHHohenholz 1
72290 Loßburg
GERMANY**Certification Mark:****Product: Swivel Chairs**

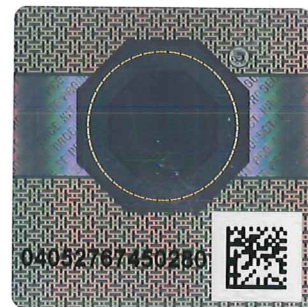
The product was tested on a voluntary basis and complies with the essential requirements. The certification mark shown above can be affixed on the product. It is not permitted to alter the certification mark in any way. In addition the certification holder must not transfer the certificate to third parties. See also notes overleaf.

Test report no.: 713105554-1

Valid until: 2022-10-23

Date, 2017-10-24

Page 1 of 2


(Jens Biesenack)



Product Service

CERTIFICATE

No. Z2 17 10 71923 040

Model(s):**Family: ECO****Types:****1050 / 1060 S5****1050 / 1060 S6****1050 / 1060 EB****Parameters:****General description:**

adjustable in height by gas spring,
synchronous seat inclination plus separate
seat tilt adjustment, seat depth adjustment,
adjustable height of the backrest,
Armrests are mounted at the seat support
and are adjustable in height and clear width.

Seat support:

Type S5: synchro mechanism with seat depth adjustment

Type S6: synchro mechanism with seat tilt-
and seat depth adjustment

Type EB: "Ergo Balance"

synchro mechanism with seat tilt- and seat
depth adjustment

and Ergo Balance

plastic seat with seat pad XT/1050-60

Height adjustment:

by gas spring, Type Stabomat C,
manufacturer Stabilus

Backrest:

front is upholstered, plastic seat Type 1050/1060

Armrests:

plastic armrests, in height
and clear width adjustable Type 1 and Type 2

Base:

made of die-cast Aluminium, plastic

Rollers:

load-dependent limited double roller Ø 50 mm

**Tested
according to:**

PPP 51051A:2010

**Production
Facility(ies):**

71923

Page 2 of 2